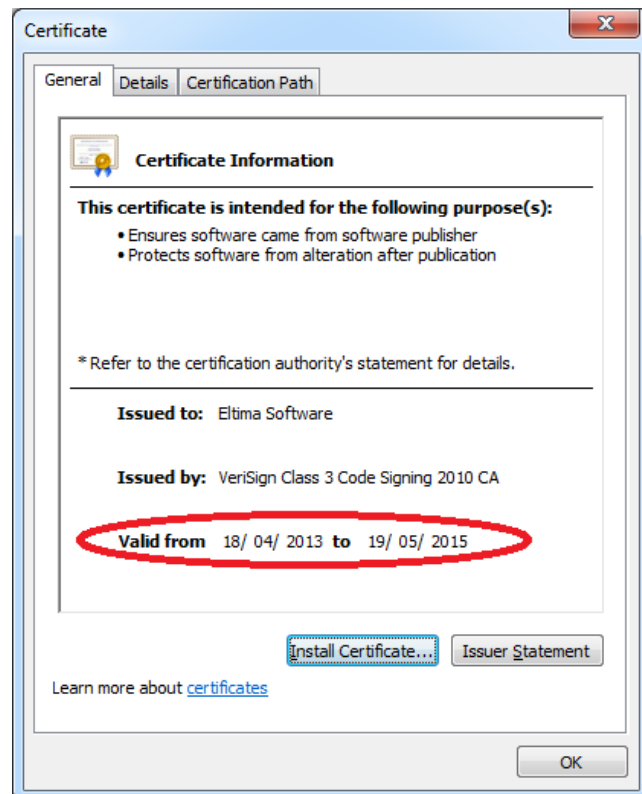


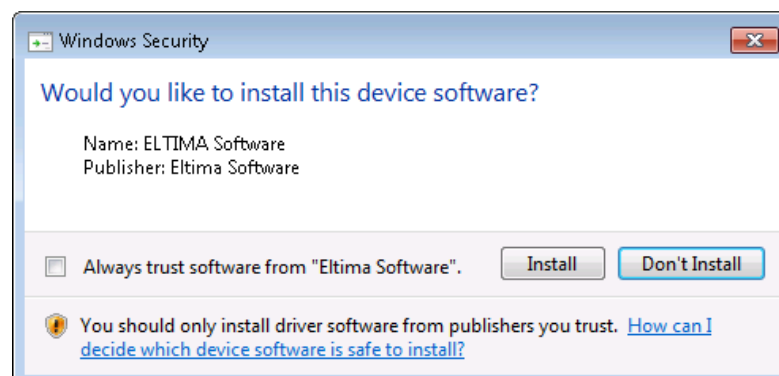
Netburner Virtual Comm Port 2.1

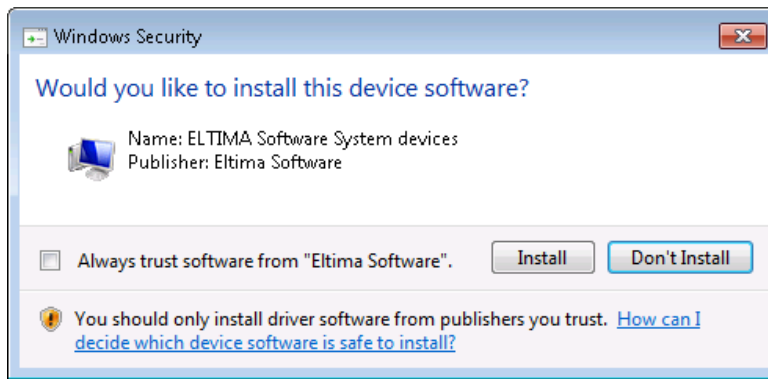
We're trying to package the following software: Netburner Virtual Comm Port 2.1
Source location: <https://www.netburner.com/support/doc-s-and-downloads/sb800-ex/deployment-tools-25>

If run in mode 'win32' (attended installation) the software installs fine except for the fact that the vsbsetup.exe has an expired certificate.



Prepopulating that certificate in the 'Trusted Publishers' store for the local machines suppresses the ominous warnings during the install:

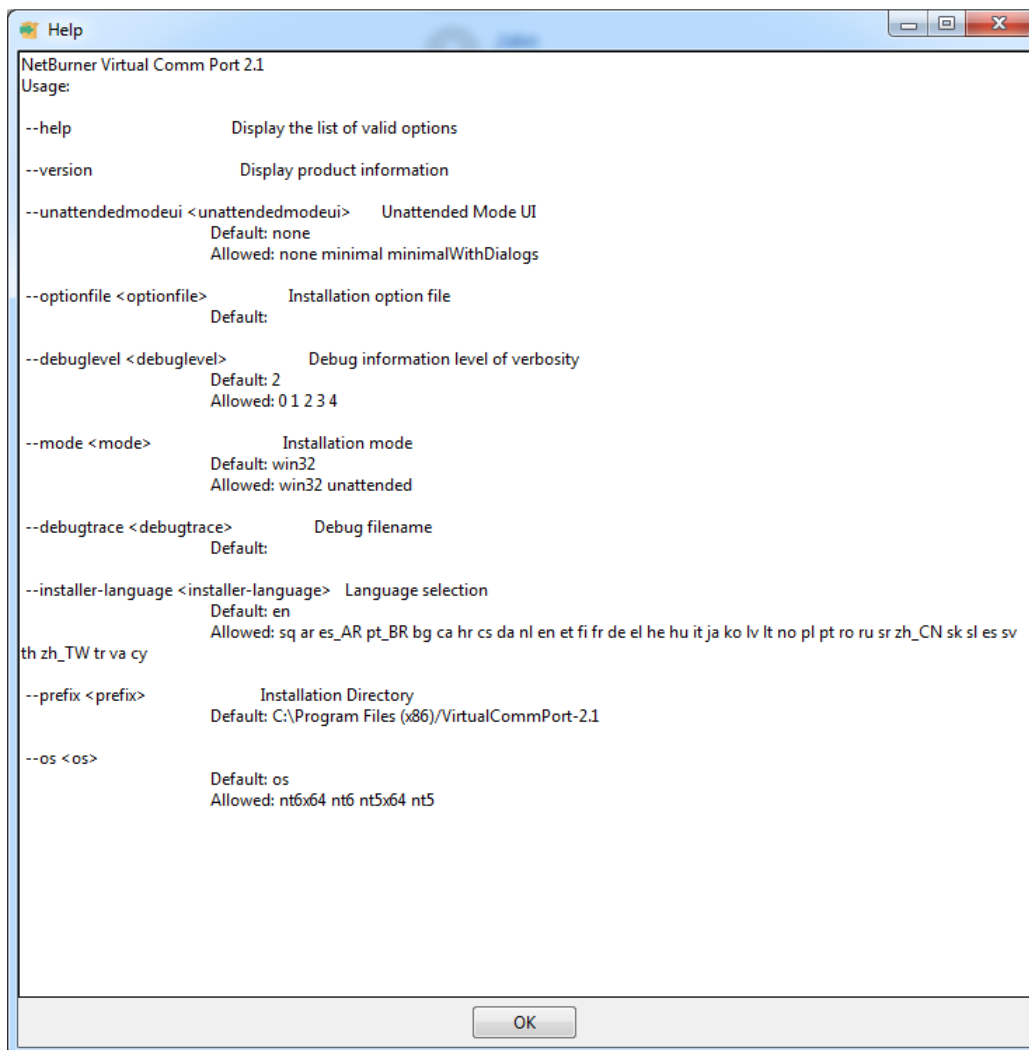




But this is of course not a recommended way of working in a production environment and should be fixed by Netburner as soon as possible.

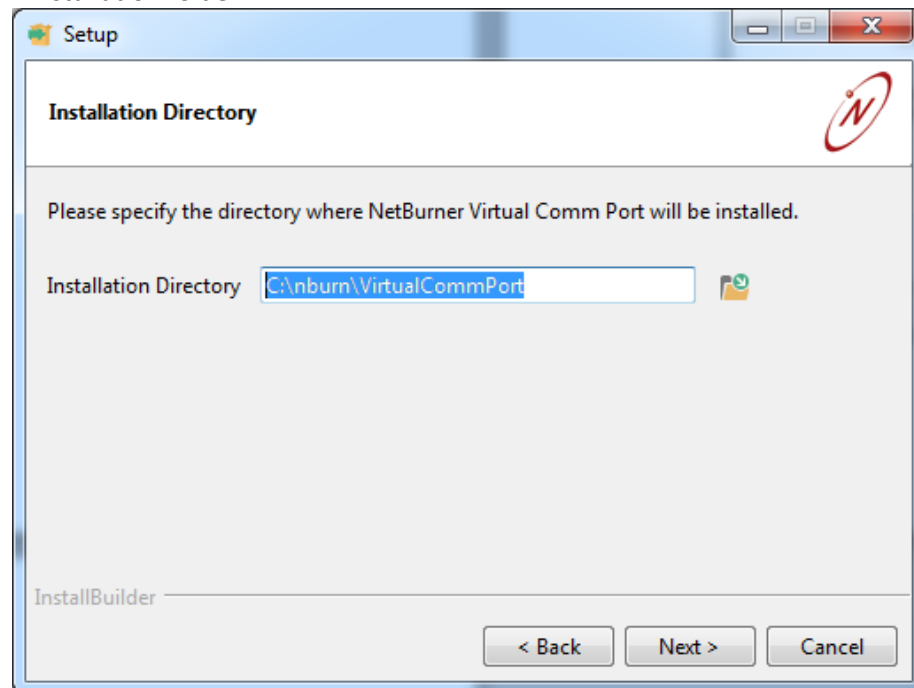
When deploying this application for enterprise use we need to be able to do an unattended silent setup... This is when the real misery starts...

The installer package uses a Bitrock InstallBuilder package framework. Parameters can be passed to the setup file as explained by the 'VirtualCommPort-2.1.exe --help' command.



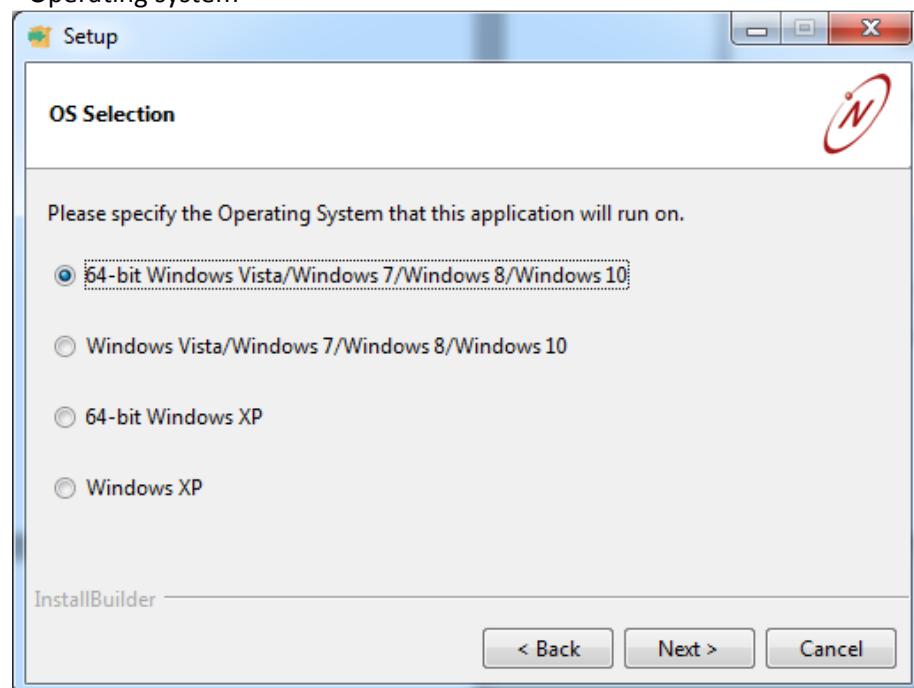
A pretty straight-forward packaging job, right?
The attended setup has 2 dialog windows with choices:

- Installation folder



Our company policy prohibits us from installing directly on the root drive, so we wish to change this to another location than the default proposed 'C:\nbum'

- Operating system



Weird that the setup does not know which operating system it is running on, but okay... Let's roll with it.

Running the below command seems to be what we want:

```
VirtualCommPort-2.1.exe --unattendedmodeui none --mode  
unattended --installer-language en --prefix "C:\Program Files  
(x86)\VirtualCommPort-2.1" --os nt6x64
```

Warning: case-sensitive parameters!!

The result is that the alternative installation directory is completely ignored and the installation happens anyway in the default C:\nburn folder. But even worse, the installation only succeeds in half of its actions:

```
Log started 10/05/2018 at 12:58:23
Preferred installation mode: win32
Trying to init installer in mode win32
Mode win32 successfully initialized
Preparing to Install
Preparing to Install
Directory already exists: C:\nburn\VirtualCommPort
Unpacking files
Directory already exists: C:\nburn\VirtualCommPort
Unpacking files
Unpacking C:\nburn\VirtualCommPort\vspdtp_install.exe
Unpacking C:\nburn\VirtualCommPort\sec.dll
Unpacking C:\nburn\VirtualCommPort\NBVirtualCommPort.exe
Unpacking C:\nburn\VirtualCommPort\sec_service.exe
Directory already exists: C:\nburn\VirtualCommPort
Unpacking files
Unpacking C:\nburn\VirtualCommPort\evserial7.sys
Unpacking C:\nburn\VirtualCommPort\vsbsetup.exe
Unpacking C:\nburn\VirtualCommPort\evsb7.cat
Unpacking C:\nburn\VirtualCommPort\evsb7.inf
Unpacking C:\nburn\VirtualCommPort\evsb7.sys
Unpacking C:\nburn\VirtualCommPort\evserial7.cat
Unpacking C:\nburn\VirtualCommPort\evserial7.inf
Creating Shortcut for Uninstall NetBurner Virtual Comm Port
Installing Virtual Serial Bus
Executing C:\nburn\VirtualCommPort\vsbsetup.exe
Script exit code: 0
Script output:
Script stderr:
Installing Virtual Serial Bus
Registering Virtual Serial To Ethernet Service
Executing C:\nburn\VirtualCommPort\sec_service.exe REG "NetBurner, Inc." "0000V3-3A2739-YN3KNM-6PP2Q3-71BKZM-3PDB1E-9A80FD-45EDB6-0D9AD5-8BF727-2A25B2-672E06" &
Script exit code: 0
Script output:
Script stderr:
Registering Virtual Serial To Ethernet Service
Installing Virtual Serial To Ethernet Service
Executing C:\nburn\VirtualCommPort\sec_service.exe install &
Script exit code: 0
Script output:
Script stderr:
Installing Virtual Serial To Ethernet Service
Enabling Virtual Serial To Ethernet Service
Executing C:\nburn\VirtualCommPort\sec_service.exe enable &
Script exit code: 0
Script output:
Script stderr:
Enabling Virtual Serial To Ethernet Service
Creating Uninstaller
Creating uninstaller 25%
Creating uninstaller 50%
Creating uninstaller 75%
Creating uninstaller 100%
Installation completed
Log finished 10/05/2018 at 12:59:00
```

InstallBuilder does not have a modifier suffix to convert forward slashes to backslashes. This could be caught with a <setInstallerVariableFromRegEx> action but this has not been implemented

Executing C:\nburn\VirtualCommPort\vsbsetup.exe
Script exit code:
Script output:
Script stderr:
Unknown error while running C:\nburn\VirtualCommPort\vsbsetup.exe
Problem running post-install step. Installation may not complete correctly
Unknown error while running C:\nburn\VirtualCommPort\vsbsetup.exe
Problem running post-install step. Installation may not complete correctly
Unknown error while running C:\nburn\VirtualCommPort\vsbsetup.exe
Unknown error while running C:\nburn\VirtualCommPort\vsbsetup.exe

Not executed in unattended mode

Not executed in unattended mode

By reading the Bitrock InstallBuilder user guide, I believe this is just a poor packaging job by NetBurner as unattended mode installs are possible with the framework.

The only way we could make this work is:

- 1) Prepopulate the expired certificate in the Trusted Publishers store for the local machine
- 2) Copy the C:\nburn folder manually (captured from a manual install) before starting the setup
- 3) Run the unattended setup by executing command:
VirtualCommPort-2.1.exe --unattendedmodeui none --mode unattended

Then the setup runs silently but still installs to the C:\nburn folder instead of our preferred location.